



MA2 MA4 • TEST REPORT CAR&HIFI 2/2025

Eton MA 2 + MA 4: Compact Premium Class

Tastefully done, Eton!



► With the MA series Eton has renewed the premium segment in its amplifier range. Here we check out the two and four channel models in a thorough test.

Modern, stylish, practical, adapted for modern vehicles, extremely good performance and perfectly finished — Eton's brand new MA amplifier series wants to be everything but old-fashioned or boring. Eton certainly knows how to make things look good. The casings are made of solid die-cast metal in a stylish gunmetal finish all round. A common identifying feature is the corrugated lid that conceals the preset

controls — together with an orange setting tool. For those who wish, the power amps can be stacked and only the top-most lid used. You won't find that too often. Thought has also been given to the terminals, with practical plug connectors being used to connect power and speakers to the casing. Our MA 2 and MA 4 have the same size and are compact, though no longer tiny (the really small PA amps are for that). In

addition to our two power amps there is also a 6-channel and a mono in the making. All MAs come with a remote gain control. Mounting material is also included in the package for different mounting situations. Short wiring harnesses for the high-level ports are also included for comprehensive customization to allow operation with the original system. You see the MAs not only have simple High/Low switches but go

MA2 MA4 • TEST REPORT CAR&HIFI 2/2025



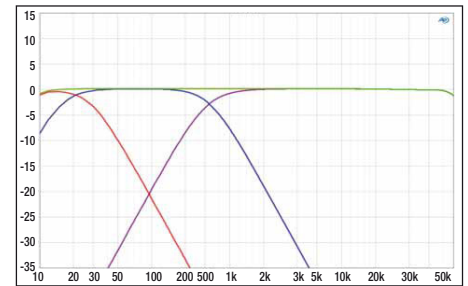
The MA series has solid connectors, remote controls and dedicated high-level inputs are standard

considerably further. One switch optimizes the high-level inputs for normal car radios (up to 15 volts) or for factory amps (up to 40 volts). An additional switch per channel pair selects the input impedance between 10 ohms, 150 ohms or 600 ohms. In this way a vehicle speaker diagnostics system (10 Ohm) is covered just as well as are various VW or BMW systems, which like to see 150 or 600 ohms. The filters are clearly and practically arranged. The MA 2 can switch to bandpass, just like channels 3 and 4 of the MA 4. Together with channels 1 and 2 tweeters can also be activated, whereby a multiplier switch also enables precise tuning. In addition, everything can be switched off making possible cleaner operation of the DSP system, without pots and resistors in the signal path. It's not just the finish of the casings of the MAs that is pleasing. What you see when opening them up also definitely deserves a Premium tag. Gorgeous, multilayer circuit boards and the finest components can really win you over. We find solid, regulated transformer PSUs, whose

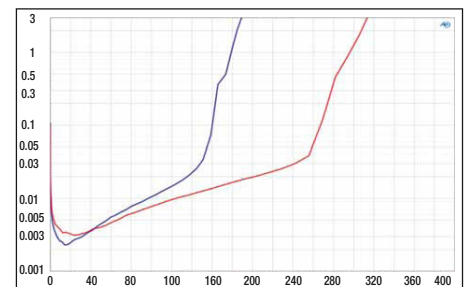
power components are screwed onto the tailor-made heat sink with a broad aluminum strip. On the other side we find the MOSFETs for amplification on the MA 2 also screwed on under the circuit board, while the MA 4 relies on macroscopic transistors that are cooled by the circuit in a very modern way. Class D control is provided by driver ICs: one IRS2092 per channel for the MA 2 and a 4-channel IRS2093 for the MA 4. Altogether, with the output filtering using first-class flat wire coils and film capacitors we can only say: Tastefully done, Eton!

Measurements and Sound

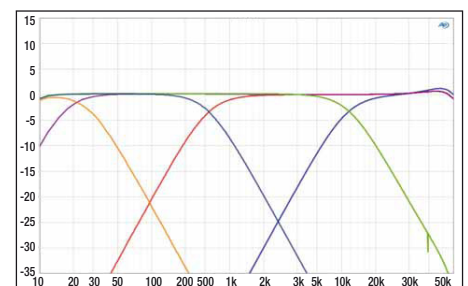
In the test lab the first thing we register is that the MAs show a frequency response up to over 50 kHz —perfect for the reproduction of HiRes music. Well, from a top product we expect nothing less than a high clock rate and faultless low pass filters. Very low distortion is also on our wish list, and the 2-channel MA 2 delivers it to perfection. But the MA 4 also gives no cause for criticism either, in fact quite the opposite. This is also true of the output, where the MA 4 already delivers 100 and 180 watts per channel – a 4-channel power amp



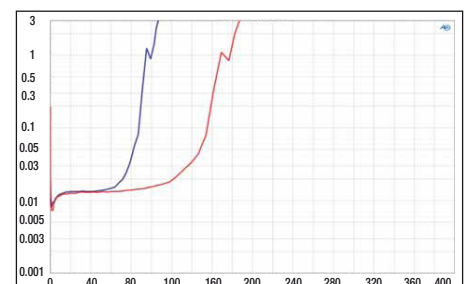
The MA 2 offers a bandpass for sub-sat separation, e.g. for BMW and Mercedes. Top end is 50 kHz with no overshoots



Full power at 180 and 300 Hz – what more could you want?



With its crossovers the MA 4 can also separate tweeters and mid-range speakers. Channels 3 and 4 offer band-pass; for 1 and 2 there is a high pass

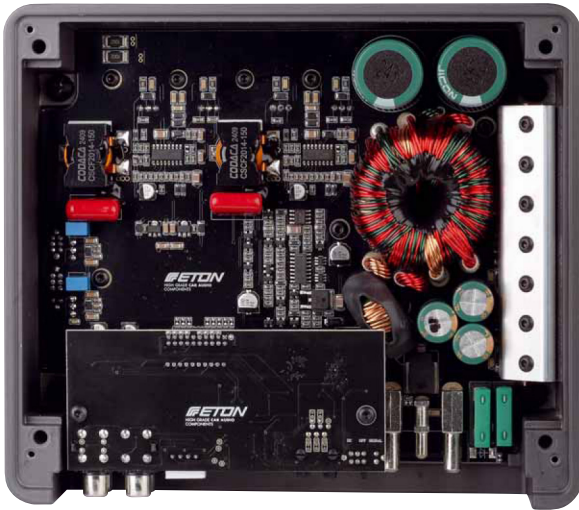


No one will complain about the distortion level of under 0.015 % nor from a small 4-channel unit above 100 and 180 watts



Filter settings and input adjustment are concealed under the stylish aluminum lid. A highlight is a setting tool with matching parking slot

MA2 MA4 • TEST REPORT CAR&HIFI 2/2025



Each channel of the MA 2 has its own driver chip, the power transistors being mounted under the circuit board

BEST PRODUCT
Top-Class
CAR&HIFI 2/2025

Amps	Eton MA 2	Eton MA 4
Price	about 280 Euro	about 280 Euro
Distributor	ACR CH-5330 Zurzach info@eton-caraudi.com eton-audio.com	ACR CH-5330 Zurzach info@eton-caraudi.com eton-audio.com
Hotline		
Internet www.		

Summary			
▶ Sound quality	40 %	1,0	1,1
Bass foundation	8 %	0,5	1,0
Pressure	8 %	1,0	1,0
Transparency	8 %	1,5	1,0
Accuracy	8 %	1,0	1,5
Dynamics	8 %	1,0	1,0
▶ Lab	35 %	1,2	1,4
Power	20 %	1,5	1,5
Damping factor	5 %	1,0	1,5
Distortion	5 %	1,0	1,0
Signal/Noise Ratio	5 %	0,5	1,0
▶ Practice	25 %	1,1	1,1
Features	15 %	1,0	1,0
Workmanship electr.	5 %	1,0	1,0
Workmanship mech.	5 %	1,5	1,5

Technical data

	2	4
Channels	2	4
Power @ 4 ohms	180	100
Power @ 2 ohms	297	178
Power @ 1 ohms	0	0
Bridged power	594	356
System power	594	620
Sensitivity max mV	340	540
Sensitivity min mV	4,5	7,0
THD+N (<22 kHz) 5W	0,003	0,010
THD+N (<22 kHz) half load	0,007	0,013
Signal/Noise Ratio DB(A)	93	94
Damping 20 Hz	259	193
Damping 80 Hz	264	199
Damping 400 Hz	251	195
Damping 1 kHz	213	168
Damping 8 kHz	24	22
Damping 16 Hz	6	6

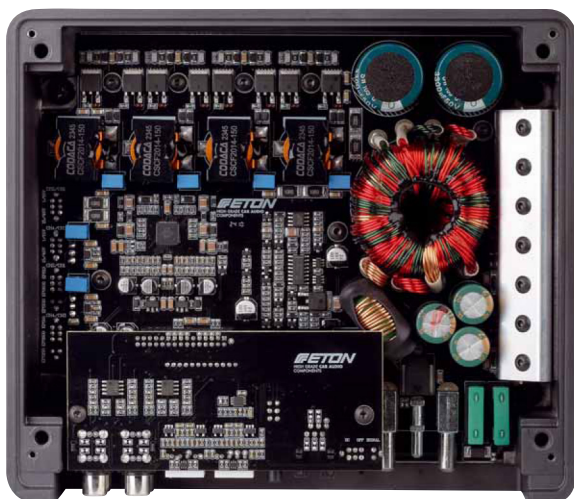
Features

Lowpass	30 – 300 Hz	15 – 6k Hz (CH34)
Highpass	15 – 300 Hz	15 – 6k Hz (CH12)
		15 – 300 Hz (CH34)
Bandpass	15 – 300 Hz	15 – 6k Hz (CH34)
Bass-boost	–	–
Subsonicfilter	via HP	via HP
Phaseshift	–	–
High-Level inputs	•	•
Autosense	• DC or signal	• DC or signal
RCA outputs	•	–
Start/Stop compatible	– (7,4 V)	– (7,4 V)
Dimensions (L x W x H in mm)	184 x 160 x 51	184 x 160 x 51
Other	remote, EBS load	remote, EBS load 2 or 4 channel input

doesn't have to do more. The MA 2 naturally goes one better, pushing out an impressive 180 and 300 watts into 4 and 2 ohms respectively. Both amplifiers therefore offer a lot of oomph out of a compact package. Also in the listening test the MAs leave nothing to be desired. Already the 4-channel unit pushes with a vengeance in the bass so that the speakers need to prepare themselves for the worst. Control is maintained at all times and the dynamic capabilities are beyond any doubt. That the MA 2 offers a tick more power for large woofers is a bonus since the MA 4 already has everything that one needs. Both amplifiers can also be gentle with the music. They also serve soft tones with fine resolution and the correct timbre.

Summary

Eton impresses with the MA series, which is an all round success. From vehicle integration to build finish and performance, everything is right down to the last detail. With these MA amps Eton does not need to fear any competition, and the value for money could not be better.



For the MA 4 there is a 4-channel driver chip and the same superb flat wire coils. At the top four pairs of MOSFETs can be seen

Top-Class 1,1	Top-Class 1,2
CAR&HIFI 2/25	CAR&HIFI 2/25
Price/performance: excellent	Price/performance: excellent
"With the MAs Eton delivers unconstrained quality – outstandingly successful amplifiers."	